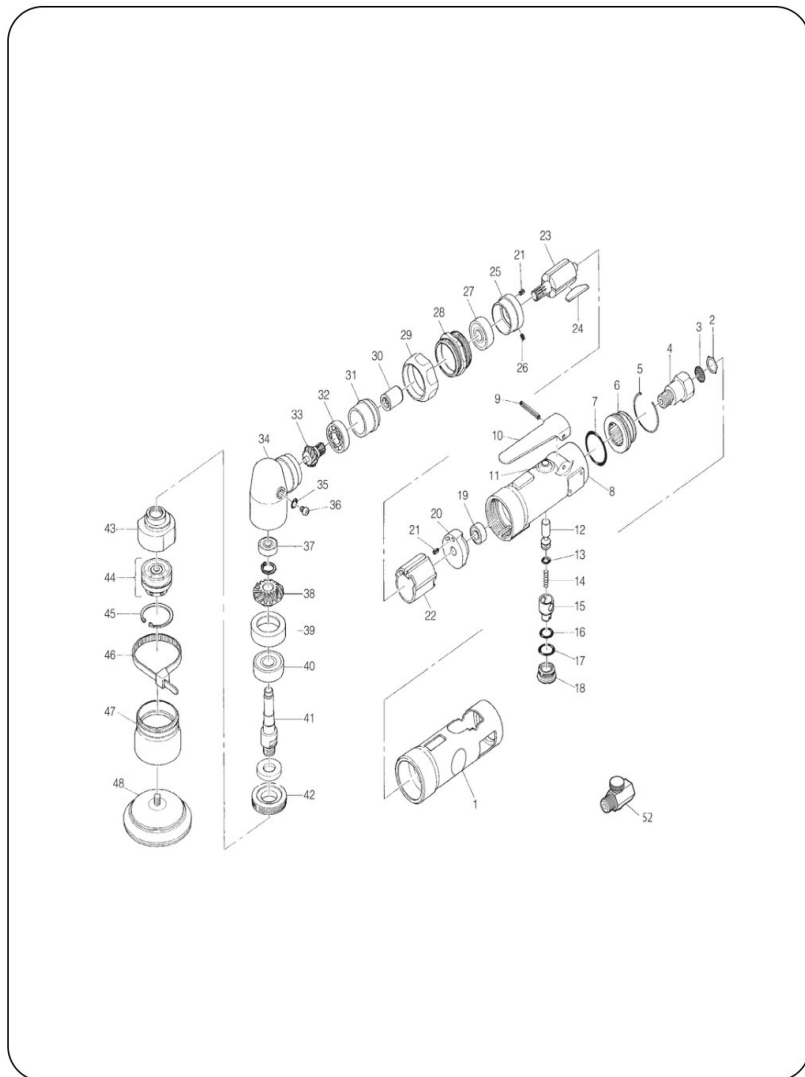


9107501 Schemat części

MINI RANDOM ORBITAL SANDER 72MM



7

ART NO. 910-7501 | MINI RANDOM ORBITAL SANDER



INDEX NO.	DESCRIPTION	PART NO.	INDEX NO.	DESCRIPTION	PART NO.
1	HOUSING COVER	M750101	26	ROLL PIN(2.5Ø-3.5MM)	M750126
2	RETAINER	M750102	27	BALL BEARING	M750127 ●
3	SCREEN	M750103	28	MOTOR CLAMP NUT	M750128
4	INLET BUSHING	M750104	29	ANGLE HEAD COUPLING NUT	M750129
5	RETAINING RING	M750105	30	COUPLING	M750130
6	DEFLECTOR	M750106	31	COLLAR	M750131
7	O-RING	M750107	32	BALL BEARING	M750132 ●
8	MOTOR HOUSING INCL. BUSH(33Ø-4)	M750108	33	PINION GEAR	M750133
9	ROLL PIN(3Ø-24MM)	M750109	34	ANGLE HEAD	M750134
10	THROTTLE LEVER	M750110	35	O-RING	M750135
11	VALVE BUSH	M750111	36	SCREW	M750136
12	VALVE STEM	M750112	37	BALL BEARING	M750137
13	O-RING	M750113	38	BEVEL GEAR	M750138
14	VALVE SPRING	M750114	39	SPACER	M750139
15	AIR REGULATOR	M750115	40	BALL BEARING	M750140
16	O-RING	M750116	41	SPINDLE	M750141
17	O-RING	M750117	42	SPINDLE NUT	M750142
18	VALVE SCREW	M750118	43	BALANCER	M750143
19	BALL BEARING	M750119 ●	44	RANDOM SHAFT ASSY INCL. BALL BEARING, SPACER & FELT RING (6000-ZZ,262-22A,262-23A)	M750144
20	REAR PLATE	M750120	45	RETAINING RING	M750145
21	ROLL PIN(2.5Ø-5MM)	M750121	46	BAND	M750146
22	CYLINDER	M750122	47	BALANCER COVER	M750147 ●
23	ROTOR	M750123	48	70ØMM VELCRO PAD	M750148
24	ROTOR BLADE	M750124 ●	52	AIR REGULATOR	M750150
25	FRONT PLATE	M750125			

● FREQUENTLY REPLACED PART - HIGHLY RECOMMENDED TO KEEP ON STOCK